

PFC SMD Module for 200/400W SMPS Reference Design

These Reference Boards are designed for development of custom applications with an SMD module or to be integrated in existing electronic equipment. It achieves a power factor correction for the complete set. The board operates with both PE-PFC-ICs, the PE4201 or the PE4301. The PE4201 operates in CRMode and the PE4301 in CCMoDe.

Technical data

Input voltage:	110V/220V (50/60Hz) AC
Output voltage:	340- 400V DC
Max. Output Power:	400 W (PE4301), 300 W (PE4201)
Efficiency:	>90 %
Power Factor:	>0.98
Board- Dimension:	150mm x 72,5mm x 45mm (L/B/H)

Application

- Switched Mode Power Supplies for low and mid power applications
- integrated power supplies
- electric light ballast

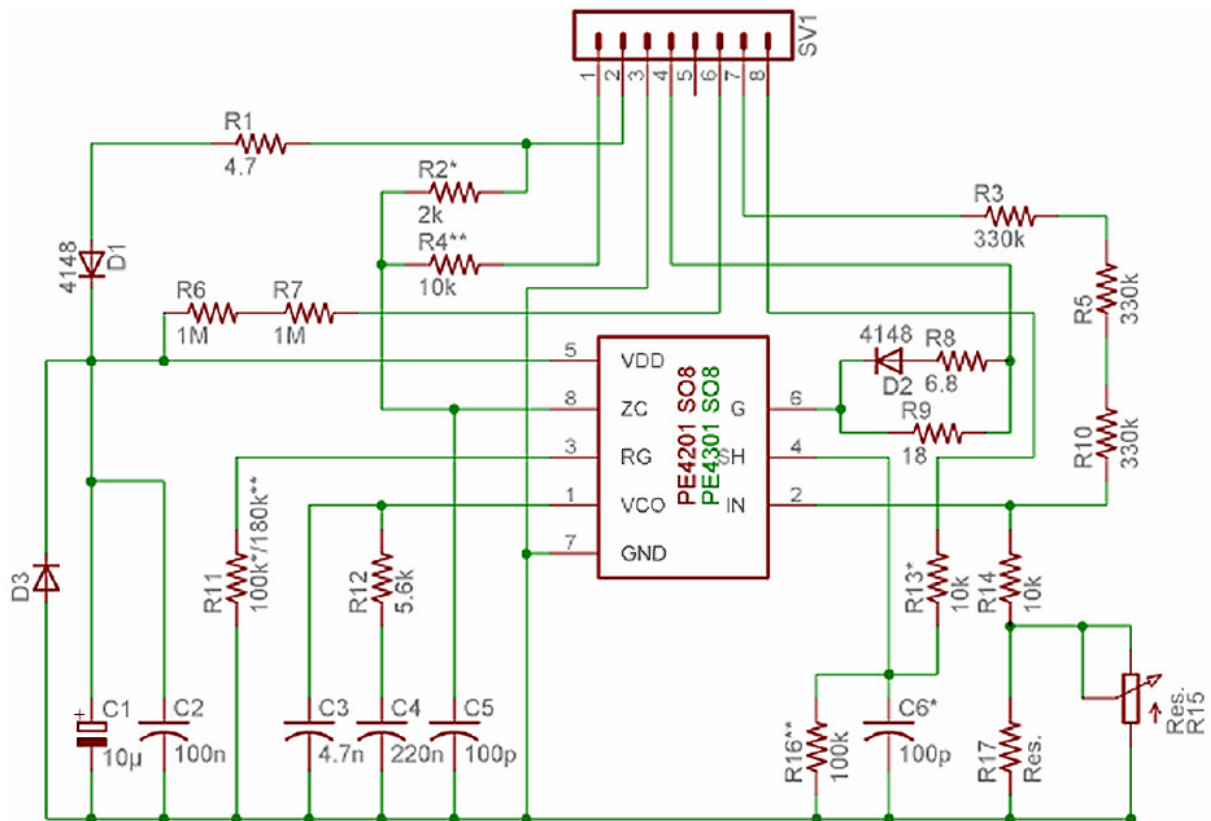


Figure 1: PFC SMD Board Schematic

PE4x01_SMD

SMD Application Board

Power Factor Correction

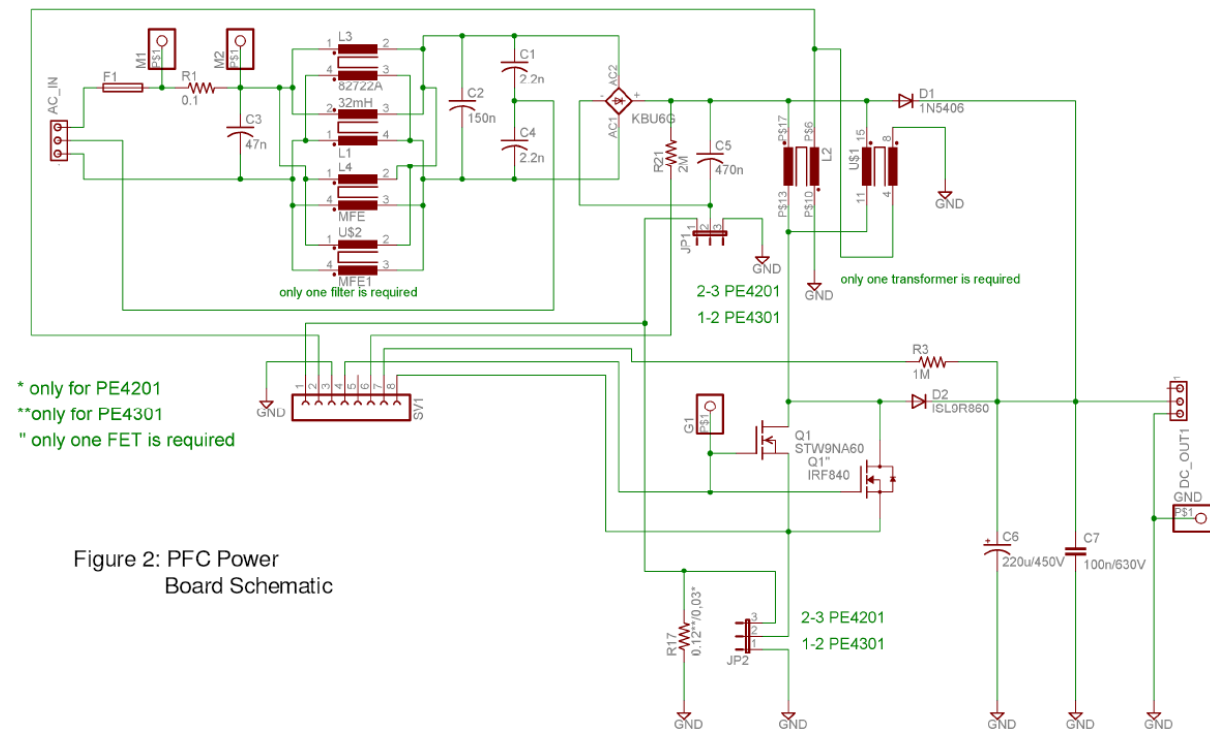


Figure 2: PFC Power Board Schematic

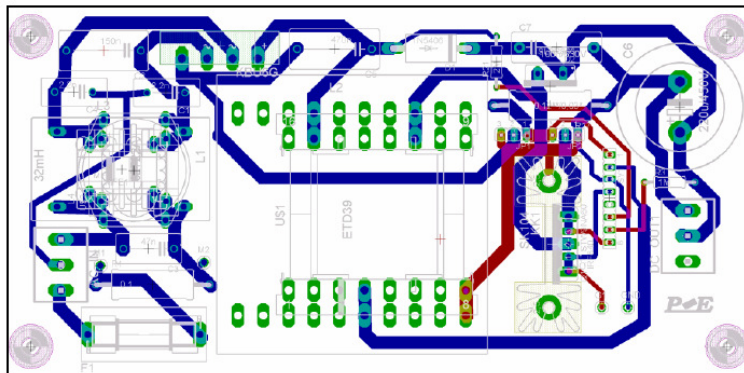


Figure 3: Power Board Top View

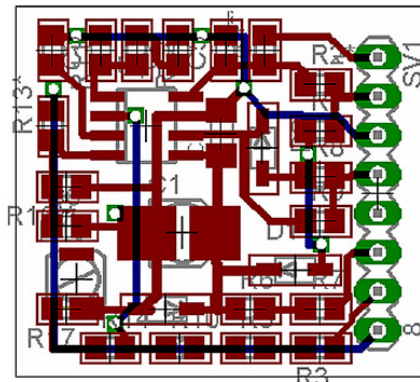


Figure 4: SMD Board Bottom View

Notes:

- For detailed description of the ICs and calculation of the surrounding devices see the data sheet PE4201/PE4301 and the users guide for the PE4201/PE4301 Evaluation Board at www.powerfactorcorrection.de
- Contact PE GmbH for Bill-of-Material Information.
- The EAGLE data base on our web-site www.powerfactorcorrection.de can be used to adapt for your own applications.

Important Notice: Productivity Engineering GmbH (PE) reserves the right to make corrections, modifications, enhancements, improvements, and other changes to its products and services at any time and to discontinue any product or service without notice. Customers should obtain the latest relevant information before placing orders and should verify that such information is current and complete. © 2016 PE GmbH. All rights reserved.